

자 력 갱 생

각 시 등 위

FOREIGN TRADE

OF THE DEMOCRATIC PEOPLE'S REPUBLIC OF KOREA

JUCHE 106
(2017)

3

Rose Tea

Rose tea is good for promoting health and beauty as it contains much anti-oxidation substances, vitamin C, P, K, E and B group, and microelements.

It protects liver, promotes urination, heals wounds and eliminates congestion.

The fragrant and sweet tea relieves fatigue, refreshes mind and promotes blood circulation.

It has special efficacy for removing freckles and wrinkles and maintaining clear and smooth skin.

The tea made of budding rose, symbol of romance and beauty, makes its drinkers full of energy and beautiful.



Korea Sangwon Trading Company
 Add: Pothonggang District, Pyongyang, DPR Korea
 Fax: 0085-02-381-4416
 E-mail: sw2012@star-co.net.kp

Contents

2. Hwanghae Iron and Steel Complex
4. Achim Technology Trading Company
6. Growing Technological Trade in DPRK
7. High-performance Oil Additive
8. Ryugyong Kimchi Factory
10. Korea Ponghwa General Corporation
12. Pyongyang Cornstarch Factory
14. High-Tech Bioengineering Technology Company
15. Electric Power Load Automatic Control Device
15. Jonghyang Compound Bacteria Products
16. Taedonggang Furniture Factory
18. February 8 Vinalon Complex
20. Historical Relics in Pyongyang
22. Sonhung Foodstuff Factory
24. Folkcraft Showroom
25. Kangnyong International Model Green Zone



8



18



20

25. Chongjin Economic Development Zone
26. Regulations of the Democratic People's Republic of Korea on Tourism in the Economic Development Parks
27. Water-filling Underwater Motor Pump
28. Nano-gold Polysaccharide Injection
29. Baicommin Injection
29. Fructosan Protective Liquid
30. Phyongsong Artificial Leather Factory
32. 5 000 Ton-class Trade Cargo Ship *Ja Ryok*



Hwanghae Iron and Steel Complex

Editor: Kim Son Ok
 Photo: Kang Chol Song
 Jon Son Il
 Yun Kwang Hyok

The quarterly journal "Foreign Trade of the DPRK" is available in English, Russian, French, Spanish, Chinese and Japanese versions.

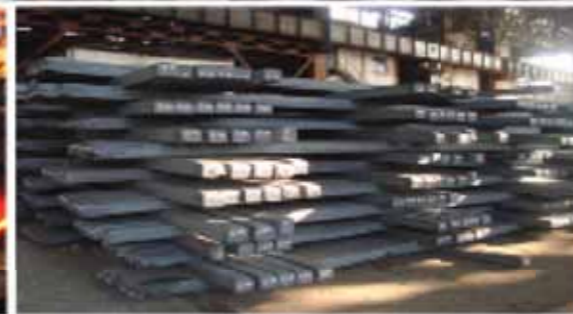
Please visit <http://www.korean-books.com.kp>

Published by the Foreign Trade Publishing House
 Add: Sochon-dong, Sosong District, Pyongyang, DPR Korea



THE CHAMBER OF COMMERCE OF THE DEMOCRATIC PEOPLE'S REPUBLIC OF KOREA

P.O.Box 89
 Add: Jungsong-dong, Central District, Pyongyang, DPR Korea
 Tel: 850-2-3815926
 Fax: 850-2-3815827
 E-mail: micom @ silibank.net.kp
 E-mail: micom @ star-co.net.kp



HWANGHAE

Iron and Steel Complex

The Hwanghae Iron and Steel Complex, a large ferrous metal producer, has carried on production at a high level in the wake of putting steel production on a Juche basis and upgrading production processes.

It perfected the Juche-based iron-making system depending on the oxygen-blowing blast furnace that does not use any coke, introduced the high-temperature combustion heating furnace that relies on anthracite gas without using heavy oil in keeping with the growing pig iron output and modernized UHP electric arc furnace and continuous ingot-making process for square rail bar so as to increase the iron and steel production.

The blast furnaces, large oxygen plants and UHP electric arc furnace equipped with the computer control system are monitored and controlled at the general

production control room and each process control room.

The complex has ensured that definite precedence is given to the supply of raw materials and standard technical regulations are observed strictly at every production process while expanding production bases of iron, steel and ferroalloy.

It works to fully satisfy the demand of different economic sectors for iron and steel materials of different sizes including steel bar and plate, wire rod, heavy rail and tie plate.

Ferrous Metal Export and Import Corporation
Add: Pothonggang District, Pyongyang, DPR Korea
Tel: 0085-02-18111-381-8078
Fax: 0085-02-381-4581
E-mail: juchemetal@star-co.net.kp



Achim Technology Trading Company



Achim Technology Trading Company, situated in Phyongchon District, Pyongyang, DPR Korea, made a tremendous development since its establishment in Juche 102 (2013).

It formed a strong design and development team in the fields of electricity and electronic automation. In order to meet the demands of the metal working, chemistry, electricity and other sectors of the national economy, it designs and turns out facilities of up-to-date technologies, including various kinds of PLC process control boards, protective devices of high-tension line, high-tension transformer and high-tension bus, low-tension AC power board, automatic power-factor compensation board and motor control board.

Many kinds of sense converters and control devices such as wind-driven generator, control devices of wind-driven generator, one-chip excitation and one-chip speed regulator, automatic synchronism switching-in device and water level relay, have been developed to make active contributions to modernizing several fields of the national economy and improving people's

livelihood.

While ensuring the prompt production of quality goods, it develops and produces ordered goods in its production base which is fully equipped with advanced pipe-making, welding and assembling facilities in a wide area.

It gives technical services and undertakes design and installation of the products and building operation to order.

Excellent are the technical specifications and stability of its products introduced in more than 100 projects of the country, including the Kim Chaek Iron and Steel Complex, Sangwon Cement Complex, Namhung Youth Chemical Complex, Mirae Scientists Street, Paektusan Hero Youth Power Station and Pyongyang Sports Goods Factory. Prompt services for orders and high quality are also a cause of the growing demand.

The company puts efforts to developing top-notch science and technology and raising the quality of its products to the world level in a far-sighted way. It also strengthens exchange and cooperation with foreign counterparts of the world on the principle of the credit-first policy.

Achim Technology Trading Company
 Add: Phyongchon District, Pyongyang, DPR Korea
 Tel: 0085-02-18111-381-6146
 Fax: 0085-02-381-4410/4416
 Email: atc@star-co.net.kp



Growing Technological Trade in DPRK

It is a major trade policy of the DPRK to upgrade the trade structure in the direction of increasing the exports of processed goods and raising the rate of technological and service trade.

Over the past decades the government consolidated the material and technical foundations of the national economy in order to develop it into an independent economy with a diverse and comprehensive structure which is capable of meeting most of the material needs for economic construction and the people's living with domestic production.

In recent years it has rapidly developed science and technology in line with the requirements of the knowledge economy in order to establish Juche-oriented production processes in the major economic sectors and improve the sectoral structures of industry.

The country set up the Juche-based system for producing iron and lines for producing fertilizer and vinalon, and built modern manufacturers of machinery and electronic and automation elements and devices to make cutting-edge equipment so as to guarantee the country's economic development.

Last year it succeeded in the launch of earth observation satellite Kwangmyongsong 4, an aggregation of advanced science and technology, and in a static firing test of a high-thrust motor for a new-type stationary satellite carrier rocket, thereby opening up a broad avenue to space exploration.

Fully-automated, model production systems of Korean style were established, an electrode production technique for UHP electric arc furnace perfected and a world-level acrylic paint production line set up in the course of putting the major industrial sectors on Juche, modern and IT basis.

Success has been made in perfecting the production lines of a new model of tractor and other vehicles and multi-purpose farm machines, and a trade cargo ship was built and launched.

Sci-tech achievements of great significance in developing the national economy and improving the people's living standards were made one after another, including the establishment of a salt production method based on underground ultra-brine and the breeding of high-yielding strains that make it possible to ramp up agricultural

production.

Last year the economic growth rate was higher than the previous year, and the total industrial output value for the first quarter of this year increased nearly 1.5 times higher than that in the same period of last year.

The government works to raise the rate of technological trade by boosting the country's science and technology as a whole by drawing on the high and sustainable growth rate of the independent national economy.

It channels efforts into the development of such core, basic technologies as IT, nanotechnology and bioengineering with international competitive edge and such pivotal and appealing domains as new material and energy technologies and space and nuclear technologies.

Special stress is put on promising research projects with certain foundations and good results are registered by building on the successes already made.

Collaboration is promoted between producers and scientific research institutes, and enterprises expand technological trade by relying on their powerful sci-tech development forces.

Lots of establishments have built up bases for intellectual products development and technological trade and increased investment into them, including the Pyongyang Information Technology Trading Corporation, Korea Kanghung and Achim technology trading companies and High-Tech Bioengineering Technology, Pyongyang Mechanical Technology and Songchongang Pharmaceutical companies.

On technological exchange markets including the national intellectual product exhibition hall, registered intellectual products are traded between research establishments and enterprises at prices agreed upon, and external exchange and cooperation are conducted widely in such technological fields as R&D, transfer, introduction and advanced technology service as well as development of products.

A nationwide diffusion network has been established centring on the Sci-Tech Complex, a grand house for all-people study and multifunctional hub of scientific and technological dissemination, going a long way towards

developing technological trade.

In this year of science and education when the universal 12-year compulsory education has been enforced in an all-round way, technical senior middle schools have newly been instituted across the country and educational conditions and environment at colleges and schools have been given a facelift.

While increasing investment into the sci-tech fields, the government bolsters up the protection of intellectual property to provide favourable environment and conditions for permitted trade in patented technologies, technical know-how and trademark right and for the provision of technical service.

Invention has been safeguarded and encouraged by the long-standing legislation for the protection of property rights including laws on invention, trademark, industrial design, copyright and appellation of origin.

The DPRK joined the World Intellectual Property Organization in Juche 63 (1974) and signed and has sincerely implemented such international conventions as the Madrid agreement concerning the protection and international registration of marks, the Paris convention for the protection of industrial property, the patent cooperation treaty and the Lisbon agreement for the protection of literary and artistic works.

Patented technologies are legally protected by lots of patent and trademark attorneys.

Advanced technologies in different fields are registered as patents or knowhow to increase the range and volume of transactions and a variety of activities for permitted trade in trademark, copyright and adjoining rights are carried on.

Last year different establishments developed advanced technologies relating to various products to register them in the national lists and in the WIPO, thus increasing their exports. They included large-size mining equipment, electric rotary machines, precision machines, electronic goods, software, medicines, biotechnological products, the new materials of special alloys, health foods and sports goods.

This year, too, witnesses brisk activities to register latest technologies as patents and knowhow and to export them.

The government encourages relevant sectors to conduct technological trade and sci-tech exchange in a diverse way so as to introduce advanced foreign technological achievements in time to suit the country's specific conditions, while putting main stress on strengthening the independence and Juche character of the national economy.

It institutes and enforces legislation to help trading companies, enterprises and research institutes conduct technological trade smoothly, including laws on foreign trade, technological import and export, and joint venture and regulations on introduction of foreign investment and latest technologies.

Research institutes and universities are encouraged to build and run bases for making cutting-edge products so as to resolve the fund problem by themselves.

The Unjong High-Tech Development Zone, Kangnyong International Green Model Zone and other economic development zones enforce the preferential system to introduce cutting-edge technologies, while conducting brisk activities to create environment favourable for development.

Laws, systems and mechanisms are in place for those zones to give preferential treatment to those foreign investors that introduce advanced technologies and modern production equipment, in terms of taxation, land utilization, and entry and exit of personnel and materials.

The Seventh Congress of the Workers' Party of Korea set it as the main goal of scientific and technological development to make the country take an honourable place among the ranks of the most advanced nations in the world in the near future in terms of overall scientific and technological strength and decided on a grandiose strategy to build a knowledge-based economy in which science and technology are integrated with production and hi-tech industry plays the leading role in promoting economic growth.

The DPRK will as ever rapidly develop its overall science and technology in keeping with the world trend of sci-tech development and conduct brisk technological trade in a diverse way, thereby expanding and boosting external economic relations.

Jo Chang Jun, candidate academician, professor, PhD and chief of the trade economics section at the University of National Economy

High-performance Oil Additive

When 0.05 – 0.1% of dimethylcarbonite, an organic liquid oil additive, is added to the oil fuel of locomotives, trucks or electric generators, it can save over 5.9% of gasoline and 7.1% of diesel oil.

The additive helps prolong the service life of engines as it prevents corrosion and such abnormal combustion phenomena as knocking, and plays as a purifier.

It also markedly reduces the hazardous substance content in exhaust fumes.

Kanghung Technology Trading Company

Add: Sosong District, Pyongyang, DPR Korea

Tel: 850-2-18111-341-8544

Fax: 850-2-343-6663

E-mail: arirangip@star-co.net.kp





Ryugyong Kimchi Factory

The Ryugyong Kimchi Factory mass-produces kimchi on a scientific basis.

The factory's main products are kimchi, a traditional Korean dish and one of the world's five health foods, and other processed vegetables.

Its annual production capacity is over 2 000 tons of kimchi, the same amount of pickled vegetables and more than 200 tons of processed mushrooms.

The factory has established an integrated manufacturing system and put the organization of production, business management and quality control on an IT and scientific basis. All its production processes are automated and streamlined.

It is equipped with automatic cabbage and radish feeders, radish cutter for kkaktugi (cubed radish kimchi), container washer, seasoning feeder, vacuum packer and other modern machines.

Workplaces are separated from corridors and fermenting, maturing and packing rooms linked to the finishing process to make the production environment germ- and dust-free.

The factory is also furnished with the state-of-the-art analyzing equipment such as kimchi general analyzer to fully guarantee the quality and hygienic safety of products.

It focuses on diversifying the range of products and introducing scientific and standardized production methods. Kimchi varieties include full cabbage kimchi, pickled sliced radishes (cabbages) seasoned with pepper, white kimchi, chonggak kimchi, nutritious kimchi for children, bean sprout kimchi, cucumber kimchi and kkaktugi, and those of pickles are pickled radish, *Pleurotus eryngii*, agaric and others.

The full cabbage kimchi has a rich content of natural vitamins including vitamin C, essential amino acids and microelements, and tastes strong and savoury, so it is much favoured by the customers.

The main ingredients are cabbage, radish, garlic, ginger, onion, powdered red pepper, sugar and walleye pollack.



The elderly and children like white kimchi. As powdered red pepper is not used for it, it is not hot, but produces a well-balanced taste.

The cubed radish kimchi is crunchy and tastes fragrant and savoury due to fine fermentation.

Tongchimi, or watery radish kimchi, tastes strong, fresh yet plain, and its juice is widely used as a drink or noodle broth.

Kimchi attracts growing interest and popularity because it is rich in vitamins and minerals, helps digestion with a high content of health-promoting bacteria and is especially effective in checking the growth of cancer cells as a low-fat food with rich fibre.

The factory now works on steadily raising the industrial level of kimchi making while further upgrading the production processes.

Ryugyong Technology Company
Add: Taedonggang District, Pyongyang,
DPR Korea

Tel: 850-2-18111-341-8687

Fax: 850-2-381-4410



Korea Ponghwa General Corporation

The Korea Ponghwa General Corporation is a trade organ of the state, which is engaged in trade businesses on the basis of firm material and technical foundations. It has tens of clothing factories, all equipped with up-to-date machinery. The factories produce various kinds

of clothes and knitted goods including exclusive ready-made clothes while engaging in bonded garment processing according to the contracts with foreign companies in Europe and Asia. The general corporation is paying a great attention to improving the

technologies applied in the factories while ensuring the flexibility of production and promoting the product quality as required by the ever-changing demand of the world market. It introduces advanced technologies so as to make new types

of clothes in unique and various designs.

Its everyday garments and ceremonial costumes presented at the 25th world invention and latest technological goods exhibition won the diplomas. The products including clothes for ready-made wear, children, sports activities, and those for winter made of cotton and duck feather, knitted and Arabian national clothes are favoured by customers for the high quality and prompt delivery.

Stable productivity, expansion of product ranges and development of new articles are the corporation's consistent business strategy.

The general corporation's affiliate, Ponghwa Soap Factory, has established an integrated manufacturing system to mass-produce soaps and detergents in an efficient way.

The hard-charcoal and rice-bran soaps are functional soaps which make skin soft and smooth, prevent skin aging and remove acne. They enjoy popularity among women.

The Pyongyang Chewing Gum Factory is furnished with up-to-date production processes and equipment and produces Unbangul-brand chewing gums of various kinds.

It produces functional and sugarless chewing gums and many others which are efficacious in preventing oral diseases.

The Ragyon Trading Company engages in the production of shock-absorbing packing materials and containers of various kinds, with a complete set of equipment for preparatory foaming, maturing, moulding, drying and cutting.

Its products are good for insulating heat and cold and absorbing shock, so they are widely used in packing electric goods, marine and farm produce.

The general corporation also exports magnetite concentrate, jordsite, such farm produce as perilla seeds, bracken, and marine products like shellfish, crabs, octopus and squid from the east and west seas of Korea.

The Korea Ponghwa General Corporation is bolstering up collaboration with companies in many other countries on the principle of mutual benefit.



Korea Ponghwa General Corporation
 Add: Central District, Pyongyang, DPR Korea
 Tel: 0085-02-18111, 18222, 18333 (Ext. 341-8023, 8170)
 Fax: 0085-02-381-4410 (4416, 4427, 2100)
 E-mail: ponghwa@silibank.net.kp

Pyongyang Cornstarch Factory



The Pyongyang Cornstarch Factory produces various kinds of foodstuff with corn cultivated at home.

It has been recently rebuilt in a modern style, as it has put primary importance to building up its material and technical foundations in step with the developing reality.

It has automated and flow-lined its processes to produce okdang sugar, millet jelly, biscuits, candy and others and made them germ- and dust-free.

It has established an integrated manufacturing system, thus saving manpower and radically increasing production efficiency. It has also set up a strict quality-control system of raw materials and the products so as to meet the hygienic standards.

Its food products, including orange-flavoured biscuits, fruit-flavoured sweets, millet jelly, okdang

sugar, oil, starch and medicinal glucose made from corn are highly nutritive, hygienic and tasty.

The factory makes many profits by setting up a process of producing from by-products animal feed containing crude protein, carbohydrates, coarse fibre.

Its sales agent is Pyongyang Sweets Trading Company.

Pyongyang Sweets Trading Company

Add: Songyo District, Pyongyang, DPR Korea

Tel: 0085-02-18111-999(8597)

Fax: 0085-02-381-4681

E-mail: mfdi@star-co.net.kp



High-Tech Bioengineering Technology Company

The High-Tech Bioengineering Technology Company, located at the foot of picturesque Munsu Hill in Pyongyang, provides technological and sales services with intellectual and bioengineering products with the international competitive edge.

The technological service covers a wide range such as the arrangement and analysis of genes, the design, manufacture and test of biochips, the separation and refining of nucleic acid and protein, the breeding of good varieties of various animals and the tissue culture of plants of economic value.

Special favourites with the fruit growers include the technique of tissue culture of stock and graft of dwarf apple tree, the method of checking viruses in the apple tree



by means of molecular tracer, the process of mass-producing the saplings of the stock cultured tree and the method of producing the saplings based on cultivation on very densely planted fields.

Bioengineering is also applied to mass-producing such plants of economic value as sharp persimmon tree, fragrant rose, licorice and Bupleurum scorzoneraefolium.

In particular, a variety of Tanbi-brand medicines and health foods are highly favoured by users as they help hasten the growth of body. They include anti-thrombosis tonic, cerebral thrombosis injection, blood-making,

hormone nourishing tablet, anti-tumour immunity-enhancing drug, growth accelerant and insulin.

The company also provides credible technological service to different countries, transferring technologies and conducting joint research for technological development and brisk scientific exchanges.

High-Tech Bioengineering Technology Company
 Add: Taedonggang District, Pyongyang, DPR Korea
 Tel: 850-2-18111-381-6133
 Fax: 850-2-381-2100
 E-mail: CDSM@star-co.net.kp



Electric Power Load Automatic Control Device

Sanyong Joint Venture Company
 Add: Phyongchon District, Pyongyang, DPR Korea
 Fax: 850-2-381-4410 E-mail: syjvc@star-co.net.kp

It automatically monitors and controls the state of electric power load.

Consisting of electric power ceiling remote-control and staggering control instruments, the device makes it possible to use generated electric power more effectively as it can automatically or telemechanically control the changes in the electric power consumption.

It can measure, display and control electric pressure, electric current, power-factor, active power, frequency, current control limit, power control limit and others.

Technical specifications:
 Working voltage (V): 80 - 220
 Working frequency (Hz): 40 - 60
 Measuring accuracy (%): 0.5 and below



Jonghyang Compound Bacteria Products

A group of compound lactic bacteria made up of various kinds of lactic acids, Jonghyang compound bacteria developed by the Health Promoting Company creates plenty of physiologically active and natural antibiotic materials helpful to health and longevity of people including vitamin B group, vitamins A, C, E and PP, amino acids, enzyme and peptide.

A regular dose of these compound bacteria not only helps normalize the plexus of enterobacteria of the aged people as well as children and young and middle-aged people, improve digestibility, enhance detoxicating function and prevent and treat various diseases, but also retards aging.

Jonghyang compound bacteria calcium nutrition powder, a product of this company, is very good for the treatment of osteoporosis, diabetes and hyperlipemia, the enhancement

of athletes' nutrition and especially for the growth of children.

As it contains these compound bacteria, calcium acetate and starch, it produces lots of organic and amino acids in the course of metabolism to provide full conditions for the absorption of calcium.

Jonghyang compound bacteria nutrition powder which contains lactobacillus lactose and the other ten kinds of lactic bacteria is especially efficacious for the treatment of digestive system disorders, acute and chronic enteritis and colitis, pancreatitis and functional disorders of kidney.

Jonghyang compound bacteria fermentation drink is an ideal natural health drink, which is made by fermenting potatoes and sweet potatoes with these compound bacteria.

It makes you feel clean inside the mouth, removes unpleasant smells from it and prevents dental caries and inflammation.



Physical Fitness Company
 Add: Moranbong District, Pyongyang, DPR Korea
 Tel: 0085-02-18111-8544
 Fax: 0085-02-381-4410
 Email: minbog511@star-co.net.kp

Taedonggang Furniture Factory

With nearly 70 years of history, the Taedonggang Furniture Factory engages in the production and sale of furniture as well as order service.

Production processes for sawing, drying, processing, assembling and polishing are equipped with machines such as mobile horizontal sawing machine, steam-heat-blowing drying kiln, automatic straight binding machine, and vacuum pressure curved surface veneer press.

The products range from household furniture like door, table, wardrobe, desk and chair to office and amenity furniture.

The factory ensures the quality of the products by standardizing designs and setting strict quality control rules and regulations.

Special attention is given to carrying on the tradition of retaining fine texture of wood and ensuring durability and elegance of the products, while pushing modernization of the production processes.

A variety of light furniture pieces made of castor aralia and linden are enjoying favour among customers for convenience and beauty.

Taedonggang Furniture Technology Company

Add: Songyo District, Pyongyang, DPR Korea

Tel: 850-2-18111-341-8687

Fax: 850-2-381-4410

E-mail: dutyfree@star-co.net.kp



February 8 Vinalon Complex

February 8 Vinalon Complex, situated in Hamhung, South Hamgyong Province, is the DPRK's leading producer of inorganic and organic chemical goods, including vinalon.

The complex gives priority to the supply of raw and other materials and fuel, and carries out scrupulous organization of production and management of equipment and technology, thereby thoroughly ensuring the close ties between production lines.

By putting an emphasis on the research into further consolidating the Juche orientation of vinalon industry and increasing the proportion of domestic production of chemical goods, it has succeeded in the domestic production of a catalyst for acetic acid production and normalized the production of vinalon, vinyl chlorure and caustic soda at a high level.

It also strives to improve the quality of the products while lowering the norm of materials consumption per unit of output and increasing the variety of goods.

Its typical products are vinalon, carbide, ethanol, and acetic acid and vinyl acetate for industrial purposes, plasticizers, disperse dyes, pesticides and polyvinyl chloride.

Vinalon cotton for spinning yarn is 38mm and 51mm in the fibre length, 4.5g/d in the fibre intensity, 33±5mol% in acetylating degree and 1.8D in fineness.

Vinalon band fibre is 7.0g/d in tensile strength and 75% in the degree of whiteness.

Carbide, a grey solid matter, generates 270L/kg of acetylene.

The complex turns out tens of intermediate and finished goods, including caustic soda, hydrochloric acid and other basic chemical products.

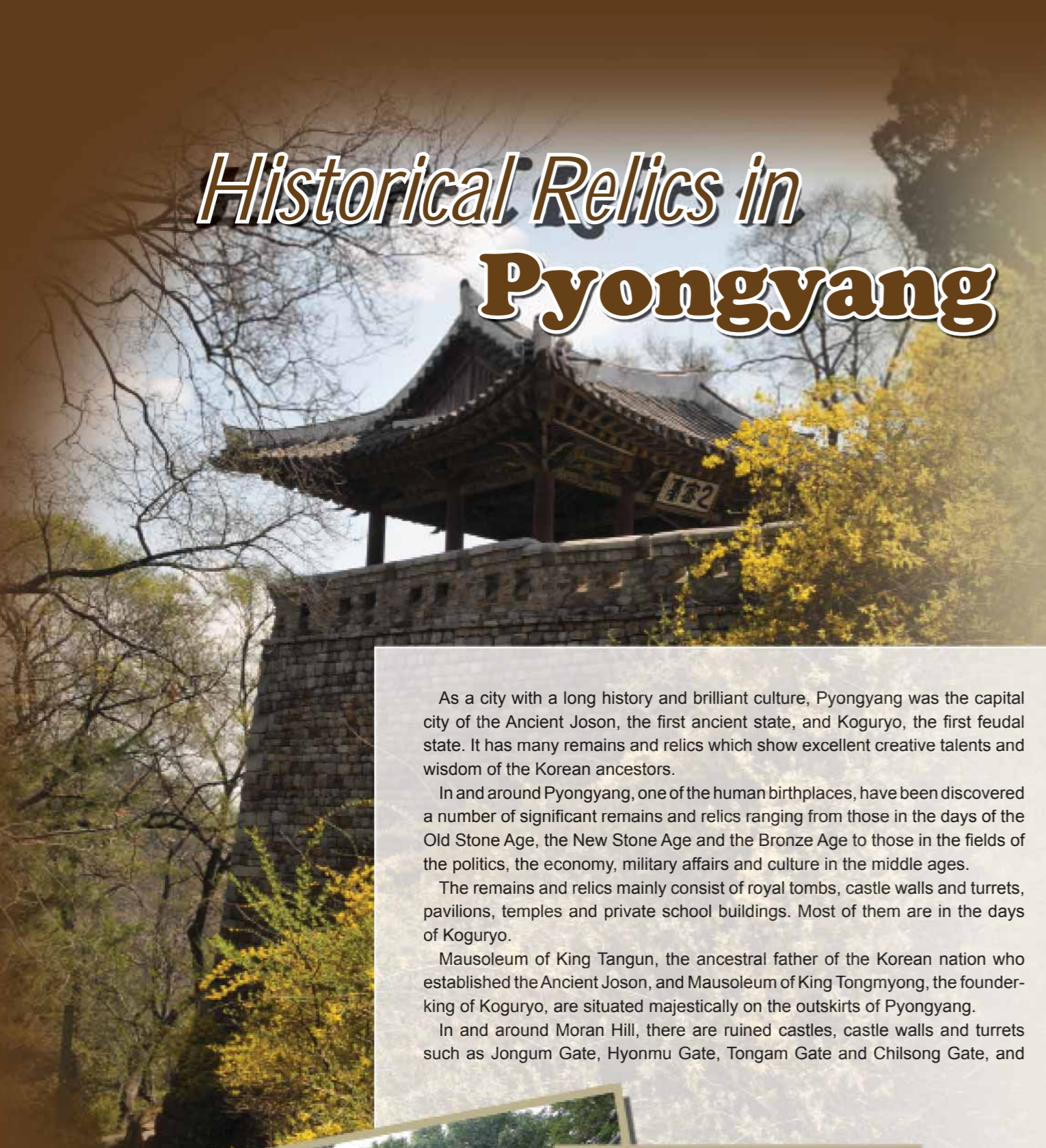
The February 8 Vinalon Complex renders an active contribution to the development of the country's economy and improvement of the people's living standards.



Korea Chemical Trading Corporation
 Add: Tongdaewon District, Pyongyang, DPR Korea
 Tel: 850-2-18111-3818974
 Fax: 850-2-3814410
 E-mail: hwahak33@star-co.net.kp



Historical Relics in Pyongyang



As a city with a long history and brilliant culture, Pyongyang was the capital city of the Ancient Joseon, the first ancient state, and Koguryo, the first feudal state. It has many remains and relics which show excellent creative talents and wisdom of the Korean ancestors.

In and around Pyongyang, one of the human birthplaces, have been discovered a number of significant remains and relics ranging from those in the days of the Old Stone Age, the New Stone Age and the Bronze Age to those in the fields of the politics, the economy, military affairs and culture in the middle ages.

The remains and relics mainly consist of royal tombs, castle walls and turrets, pavilions, temples and private school buildings. Most of them are in the days of Koguryo.

Mausoleum of King Tangun, the ancestral father of the Korean nation who established the Ancient Joseon, and Mausoleum of King Tongmyong, the founder-king of Koguryo, are situated majestically on the outskirts of Pyongyang.

In and around Moran Hill, there are ruined castles, castle walls and turrets such as Jongum Gate, Hyonmu Gate, Tongam Gate and Chilsong Gate, and

Ulmi Pavilion and Pubyok Pavilion of eight scenic spots in Pyongyang.

Many remains and relics of Koguryo are now in and around Mt Taesong, like the Taesongsan Fort which was built in the 3rd - 5th century, over 20 castle gate sites, the site of Anhak Palace at the foot of the fort, and old tomb groups.

Pyongyang has also Jongrung and Kumgang temples in the Mausoleum of King Tongmyong, Kwangbop Temple in Mt Taesong and Pobun Hermitage in Mt Ryongak, which were all erected in the days of Koguryo.

Architecture of Koguryo was developed and refined in the periods of Koryo and the feudal Joseon dynasty, the feudal states after Koguryo.

Found in Pyongyang are Sungin Hall erected in the last period of Koryo, Sungnyong Hall and other shrines for King Tangun and King Tongmyong in the days of the feudal Joseon dynasty, Ryonggok School at the foot

of Mt Ryongak, and Taedong Gate, Pothong Gate and Ryongwang Pavilion which had been built in the time of Koguryo and rebuilt in the days of Koryo and the feudal Joseon dynasty, and so on. As the representatives of superiority of the national architecture, these all have good reputation among people as the scenic spots and places of historic interest.

Thanks to the policy of the Workers' Party of Korea on the conservation of the Korean nation's cultural heritage, the remains and relics in Pyongyang are now preserved in an excellent way and enrich the world treasurehouse.

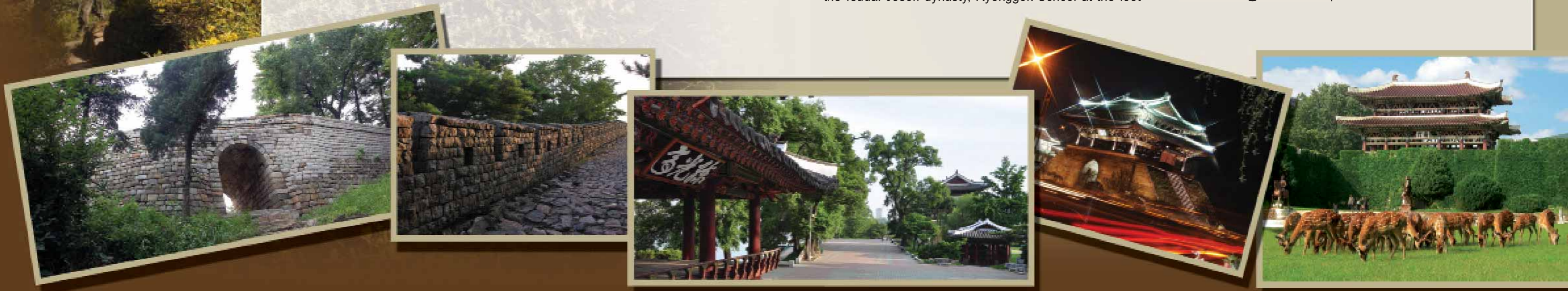
Korea International Travel Company

Add: Mangyongdae District, Pyongyang, DPR Korea

Tel: 0085-02-18111(ext)-381-8375

Fax: 0085-02-381-4516

Email: kitc-1@silibank.net.kp



SONHUNG

Foodstuff Factory

Sonhung Foodstuff Trading Company
 Add: Mangyongdae District, Pyongyang, DPR Korea
 Tel: 0085-02-18111-341-8266
 Fax: 0085-02-381-4410
 E-mail: sonhung@star-co.net.kp



The Sonhung Foodstuff Factory is a comprehensive base producing delicious and nutritious foodstuffs. Its integrated manufacturing system controls all the dust-free and sterilized production processes of ice creams, carbonated juices, biscuits, sweets, bread, noodles and liquors.

The production processes are highly intensified and flowlined to get the most profit in the possibly smallest areas, including the reasonable arrangement of CNC machines in the production fields.

While ensuring the normalization of its production, it makes a great effort to increase the variety of its products and develop the functional goods for improving people's health, such as fruit bread, biscuit complex, coffee candy, nutritious cake complex and nutritious jelly.

The fruit bread which is made up of wheat flour,

raisin, jujube, orange and other fruits, and the biscuit complex added by pine nuts, walnuts and sesame are delicious and highly nutritive and good for fatigue-relieving, are the most favourites of people, young and old.

The nutritious jelly helps to strengthen the cardiovascular system and accelerate the gastric secretion.

The nutritious cake complex made of polished rice, millet, sorghum, peanut and sesame is good for digestive and circulatory systems.

Raw materials and goods of the factory are strictly examined by the latest analyzers to guarantee high quality and hygienic safety.

Many products of the factory were registered as the country's best goods.



Folkcraft Showroom

The Folkcraft Showroom of the Korea Minye Corporation exhibits and sells folklore articles, the cultural heritage of the Korean nation.

On display there are fine art works including Korean paintings, Koryo celadons and other stonecrafts, woodcarvings, metalworks, grassworks, handicrafts and other craftworks whose creative techniques are original, brass wares, national musical instruments, jewellery, commemorative badges, stamps and copies of old paintings.

It sells traditional agricultural products.

The showroom is also used as an exhibition house of samples for the promotion of trade of the corporation.

Korea Minye Corporation

Add: Central District, Pyongyang, DPR Korea

Tel: 00850-02-18111-341-8079

Fax: 00850-02-3814410

Email: kmgc@star-co.net.kp



조선민예

Kangnyong International Model Green Zone

South Hwanghae Province presses on with a project to build an international green model zone in the town of Kangnyong County with favourable conditions for growing crops and farming sea and freshwater fish.

The zone is located in the southwestern part of the town, a peninsula region stretching from south to west, and the development area is about 3.5 sq kilometres.

It has the concentration of roads linking all directions of the county and adjoins Haeju Port. And the railway and road that pass through the town lead to Pyongyang, Haeju and Nampho. As it is mainly composed of flatland and hillocks, it provides favourable conditions for the import and export of goods.

Kangnyong County has dozens of reservoirs and over 8 000 hectares of offshore farming area. It is also rich in marine resources including trepang, ear shell, shellfish, tangle, laver, blue crab and flatfish, and has marine conditions and clean environment, all advantageous for offshore farming. Its marine products are being exported via Haeju Port.

A pollution-free area in which different farm produce grows well, especially sweet potatoes, the county has good prospects of developing into a pilot base for food production cycle combining farming and stockbreeding, a base for the production and processing of organic farm products.

Projects of the building of research bases for tapping tidal power, methane gas and other renewables, protecting environment and developing green industry technologies, as well as a tourist base are afoot.

The mode of development is a joint development between an enterprise of the DPRK and a foreign investor or solely by a foreign enterprise, and the period of development is 50 years.

Investors are now making a field survey in the wake of the completion of the master plan.

Korea Economic Development Association

Add: Taedonggang District, Pyongyang, DPR Korea

Tel: 850-2-381-5912

Fax: 850-2-3812-5889

E-mail: sgbed@star-co.net.kp

Chongjin Economic Development Zone

The Chongjin Economic Development Zone concentrates on the manufacturing of processed metal products, machinery, building materials, electronics and light industry goods and export processing, with a combination of transit trade through the port of Chongjin.

The development mode is that of setting up joint venture companies between local businesses and foreign investors or individual development companies of foreign investors, and the period is 50 years.

The zone covers an area of 5.4 square kilometres, namely parts of Wolpho-ri, Namsok-ri and Susong-dong of Songphuyong District, Chongjin, North Hamgyong Province, near the port of Chongjin.

It is provided with full conditions favourable for the development.

It is about 5 km away from the port of Chongjin, some 92 km from the Hoeryong border bridge, 96 km from the Namyang border bridge, 127 km from the Tumangang Railway Station and 56 km from Orang Airport, a very favourable condition for carrying in and out materials.

Pyongyang-Tumangang, Pyongyang-Musan and Pyongyang-Onsong railway lines pass through the zone and it has the large-capacity Kundong switch yard. It is also directly linked to the Chongjin-Rajin, Chongjin-Hamhung, Chongjin-Hoeryong and Chongjin-Musan roads.

A 3G fibre optic cable communication line needed for international communications and mobile communication network have already been built in the zone.

The Chongjin Thermal Power Station stands near it, a reliable guarantee of good electric power and heating supply service.

The water resources of the nearby Susong and Namsok rivers are abundant and there

is a conduit for industrial water from them. And inexhaustible is the source of sand on the lower reaches of the Susong River, an important material for construction.

The terrain is flat, 7-10 metres above sea level, mostly with a gradient of less than 1° and about two percent has a slope under 20°.

In the Namsok-ri area of the EDZ secondary and tertiary metal processing bases are planned to be built to use the metal products of the Kim Chaek Iron and Steel Complex, a large ferrous metallurgical plant of the country. And those for manufacturing machinery, electronic equipment, building materials and light industry goods and export processing ones are to be built in some areas of Wolpho-ri and Susong-dong. They will focus on the production and bonded processing of hydraulic machines, precision machines, robots, vehicles and rolling stock by using the products of the Ranam Coal-mining Machine Complex, Chongjin Bus Factory, Chongjin Chemical Fibre Mill and other factories and enterprises and metal processing products to be made in the Namsok-ri area.

The EDZ is built in the direction of developing freight transit transport, bonded processing and trade through the Chongjin-Musan and Chongjin-Namyang railway lines via the port of Chongjin and raising the proportion of technology-intensive processing industry by relying on the rich scientific and technical resources in and around the zone.

Korea Economic Development Association

Add: Taedonggang District, Pyongyang, DPR Korea

Tel: 850-2-381-5912

Fax: 850-2-381-5889

E-mail: sgbed@star-co.net.kp

Regulations of the Democratic People's Republic of Korea on Tourism in the Economic Development Parks

Adopted by Resolution No. 90 of the Presidium of the Supreme People's Assembly of the Democratic People's Republic of Korea on December 23, Juche 104 (2015)

Chapter 1 General

Article 1 (Mission)

These regulations are enacted for the purpose of encouraging and promoting international tourism by establishing strict system and order in tourism in the economic development parks (EDPs).

Article 2 (Application)

These regulations shall be applied to the EDPs set up for tourism.

Article 3 (Tourists)

Everybody, regardless of nationality, citizenship, sex, age, political view and religion, is allowed to do sightseeing in the EDPs.

The DPRK citizens, overseas Korean compatriots and foreigners (hereinafter called tourists) may conduct tourism in such various forms and methods as sightseeing, excursion, recreation, amusement, sports, experience and medical treatment in the EDPs.

Article 4 (Investment)

Investors may invest in the tourist sector in the EDPs such as transportation, boarding, restaurant, amusement, convenience, production and sale of souvenirs, and development of tourist resources, and establish and operate relevant enterprises.

Article 5 (Provision of convenience for tourists)

Environment and conditions for tourism shall be amply provided in the EDPs so as to afford convenience to tourists by improving the level of guiding service.

A tourist may receive necessary services including the service for sightseeing, accommodation, medical care, etc.

Article 6 (Protection of personal safety, rights and property)

Personal safety, rights and property of tourists in the EDPs shall be protected by law of the DPRK.

Article 7 (Management body)

Tourism in the EDPs shall be undertaken by the management bodies of the relevant EDPs (hereinafter called management bodies).

Article 8 (Cooperation and exchanges)

The EDPs shall improve cooperation and exchanges with foreign tourist organizations and other international organizations.

Chapter 2 Development of Tourism Resources

Article 9 (Requirements)

Tourism resources in the EDPs, such as scenic spots, historical sites and relics, and natural living monuments, shall be developed in a planned way and actively protected.

Article 10 (Survey and appraisal of tourism resources)

The EDP management bodies shall conduct the survey and appraisal of tourism resources in the EDPs on a regular basis in close relation with relevant establishments.

Relevant establishments shall provide the management bodies with necessary conditions.

The tourism resources development plan shall not be worked out contrary to the general development plan of the EDPs.

Article 12 (Investment)

An investor may invest in the development of tourism resources and carry out management activities related with tourism. In this case, he shall obtain approval from the management body as stipulated.

Article 13 (Protection of ecological environment)

An enterprise or individual intending to invest in tourism resources development shall strictly abide by the laws and regulations on environment protection, thereby preventing contamination of the EDPs and protecting their ecological environment.

An enterprise or individual shall neither destroy nor damage historical sites and relics, natural living monuments, scenic spots and landscape while developing tourism resources.

Article 14 (Protection of historical sites and relics, natural living monuments, scenic spots and landscape)

An enterprise or individual shall neither destroy nor damage historical sites and relics, natural living monuments, scenic spots and landscape while developing tourism resources.

Article 15 (Creation and use of funds for tourism resources development)

The management body may create and use funds for tourism resources development.

Chapter 3 Tourism Management and Services

Article 16 (Functions of management body)

The management body shall perform following functions:

1. Formulation of tourism-related plans and their execution
2. Approval for establishment of tourist service enterprises and their registration
3. Approval for tourist service categories and business licence
4. Approval for tourist courses and schedules and tourist service standards
5. Organization of tourist services and survey of external tourist markets
6. Comprehension of tourist service activities
7. Training of tourist experts and service staff
8. Other activities related with tourism

Article 17 (Establishment and registration of travel company)

Tourism in the EDPs shall be undertaken by travel companies in the EDPs (hereinafter called travel companies).

In case a travel company is to be established in an EDP, an approval from the central tourism guidance organ shall be obtained through management bodies.

After having been approved of the establishment, the travel company shall register with the relevant management body and obtain a registration certificate.

Article 18 (Functions of travel companies)

Travel companies shall perform following functions:

1. Promotion of tourism, recruiting tourists and organization of tourist services
2. Negotiation and conclusion of tourism contracts with foreign travel companies and organizations, and other domestic travel companies outside the EDPs
3. Formulation of tourist courses and schedules, receiving and guiding tourists
4. Recommendation of service establishments and conclusion of service contracts
5. Provision of conveniences for tourists
6. Training of tourist guides
7. Other activities related with tourism

Article 19 (Conclusion of tourism contracts and notification of reception of tourists)

Travel companies shall notify the central tourism guidance organ with the conclusion of contracts and reception of tourists through management body.

Article 20 (Tourist guides)

Tourist services shall be provided by guides from the travel companies in the EDPs.

Those who are qualified by the central tourism guidance organ for guide services shall become tourist guides.

Article 21 (Establishment and operation of tourist service business)

An investor intending to establish a tourist service business in an EDP shall obtain approval from the management body subject to relevant regulations.

Article 22 (Improvement of service standards)

Travel companies and tourist service businesses shall keep modern service facilities and equipment and improve their service standards.

Article 23 (Requirements in tourist services)

Following requirements shall be met in tourist services:

1. Protection of personal safety and property of tourists
2. Provision of services according to tourist schedules and contracts
3. Prevention of accidents and measures in case of emergency
4. Respect for political views, religious beliefs, national and religious customs and manners of tourists

Article 24 (Insurance)

Tourists may conclude a contract with the insurance company engaged in business in an EDP as prescribed by relevant regulations.

Chapter 4 Procedures and Methods

Article 25 (Application)

A tourist intending to go on sightseeing tour in an EDP shall submit a written application for sightseeing tour to the travel company through a DPRK travel company outside the relevant EDP or similar organization of another country.

The travel company that had received the application shall submit the application document to the management body.

Article 26 (Issuance of certificate)

The management body shall issue a tourist certificate based on the application submitted by the travel company. In this case an approval from the immigration office of the EDP shall be obtained.

A tourist certificate shall specify the name, sex, citizenship, date of birth, nationality, place of residence, period of sightseeing tour, and so on.

Article 27 (Entry)

A tourist shall enter the EDP through designated routes with a tourist certificate.

Article 28 (Sightseeing tour of a traveller for purposes other than sightseeing)

A traveller who visits the EDP for purposes other than sightseeing may tour the EDP within the valid period of the relevant entry/exit certificate.

Article 29 (Rights and duties of tourists)

Rights and duties of tourists are as follows:

1. Life, health and property of tourists shall be protected.
2. Services as per contract shall be provided.
3. Compensation for violation of a contract and damage inflicted on life, health and property shall be claimed.
4. Laws and regulations of the DPRK shall be respected and strictly observed.
5. Any act of violating national security, social order, public morality and customs and manners shall not be committed.
6. Any act of destroying or doing harm to tourism resources shall not be committed.
7. Any act of polluting environment, illegal hunting of animals or collecting of plants shall be banned.
8. Any act of spying out state and military secrets shall not be permitted.
9. Tourists shall refrain from going beyond the fixed tourist area.

Chapter 5 Sanctions and Settlement of Disputes

Article 30 (Civil liability)

In the event of inflicting harm on the life, health or property of tourists, failure to provide tourist services consistent with contracts, damaging tourism resources or resulting loss on enterprises or individuals, such civil liabilities as restoring to the original state, compensation for the loss, levying of penalties and arrears shall be imposed.

Article 31 (Administrative and criminal punishments)

In case of an offense against these regulations, the offender shall be subjected to administrative punishment, such as fining, suspension and confiscation.

In case of a severe breach, the offender shall be subjected to criminal punishment.

Article 32 (Settlement of disputes)

Any dispute in connection with tourism-related activities in the EDPs shall be settled through consultation.

Any dispute which cannot be settled through consultation may be settled by a court or an arbitration or mediation organ.

Water-filling Underwater Motor Pump

The water-filling underwater motor pump is used for drawing water from a deep hole or a well.

As it is simple to install and manage, it is effective in using in shafts of coal and other mines, and construction projects of hydraulic power stations and public establishments.

Technical specifications

Discharge:	20 m ³ /h
Lift:	70 m
Rotation:	2 870 r/min
Generating power:	7.5 kW
Size (diameter × height):	125 × 1 570 mm
Weight:	82 kg
Maximum underwater depth:	70 m

Kanghung Technology Trading Corporation

Add: Sosong District, Pyongyang, DPR Korea
Tel: 850-2-18111-341-8544
Fax: 850-2-343-6663
E-mail: arirangip@star-co.net.kp

Nano-gold Polysaccharide Injection

Since humanity discovered gold, gold has widely been used in making ornaments and other fancy items, treating diseases and promoting health. At present, gold is in greater demand.

Nano-gold polysaccharide injection, prepared by nanoizing natural stuff, contains Kaesong Koryo insam polysaccharide, chitosan and other bioactive polysaccharides as well as various natural activators that raise the degree of disperse stability of the nano-gold particles and thus heighten their pharmaceutical action.

Nano-gold has several properties, including high permeability, conductivity, antibacterial effects, prevention of ultraviolet rays, far infrared emission, and active oxygen elimination, thereby proving efficacious in prevention and treatment of diseases.

This injection, a combination of nano-gold with the greatest conductivity and pharmacological actions of polysaccharide in world-famous Kaesong Koryo insam, works miraculous effects in promoting human health and longevity and treating obstinate diseases.

Though man cannot absorb gold through food, the nanoized gold spreads throughout the body, thus raising human immunity and remedying the damaged electrolytic balances in cells to enhance self-healing properties of human body.

Kaesong Koryo insam, Korean specialty, contains insam polysaccharide producing unique bioactive functions in raising immunity, reviving and proliferating cells, enhancing roborant and haematopoietic functions, lowering the contents of blood sugar and cholesterol and retarding aging.

Chitosan is regarded as an indispensable element material in promoting health and longevity as it raises humoral immunity, acts against cancer, discharges poisonous materials, decreases cholesterol, depresses high blood pressure and adsorbs harmful materials.

The injection contains a harmonious combination of natural active substances defined by the present medical circles as essential for longevity, which cooperate with nano-gold in the treatment of various diseases and produce miraculous effects.

One ampoule of injection contains 100µg of nano-gold in 20-30nm, 400µg of Kaesong Koryo insam polysaccharide, chitosan and various functional and natural biogenic substances.

The injection is efficacious in the treatment of fatty liver, hepatitis, liver cirrhosis, diabetes, insomnia, cancerous diseases, rheumatic arthritis, hyperpiesia, aging, senile dementia, poisoning by drugs, alcohol and chemical substances, and complicating diseases as well as their prevention.

Patients with chronic diseases are cured of them before they become aware, and both obese and weak people find themselves returning to normalcy.

And as it retards aging, relieves fatigue and makes people invigorated, everyone can use it.

Korea Myohyang Trading Corporation
Add: Moranbong District, Pyongyang, DPR Korea
Tel: 850-2-18111-341-8136/8383
Fax: 850-2-381-4410/4416
E-mail: kwa@star-co.net.kp



Baicomin Injection

Korea Myohyang Trading Corporation
Add: Moranbong District, Pyongyang, DPR Korea
Tel: 850-2-18111-341-8136/8383
Fax: 850-2-381-4410/4416
E-mail: kwa@star-co.net.kp



Baicomin, an injection developed by the Songchongang Pharmaceutical Company, is a cutting-edge medicine that has remarkable effect on various kinds of tuberculosis, especially multi-drug-resistant forms of TB.

It kills TB bacillus and destroys its body while having no negative effect on other internal organs such as liver.

It can treat an MDR patient in a matter of 4-8 months and help him or her gain weight by over four kilograms.

Composition: Isoniazid, cyclocerin, baicalin, chitosan and functional natural physiological activators.

Dosage: One ampoule (2ml) each, twice a day, by intramuscular injection.

An ordinary TB treatment period is 20-60 days, and the cure ratio is 98%.

In case of MDR, the treatment period is 4-8 months, with the cure ratio accounting for 91%.

It is recommended to halve the dose and have an injection twice a day for additional one or two months when the results of X-ray, blood, temperature and phlegm tests show normalcy during the treatment.

The medicine is not for pregnant women.

Fructosan Protective Liquid

Korea Yua Trading Company
Add: Rangnang District, Pyongyang, DPR Korea
Tel: 0085-02-18111-341-8249
Fax: 0085-02-381-4825
E-mail: eurasa@star-co.net.kp

Fructosan Protective Liquid is a natural functional health food which was developed in a plant tissue enzyme autolysis method with such plants rich in fructose oligosaccharide as topinamber.

With levulose and oligosaccharide as chief ingredients and pectin, saponin, essential amino acids, vitamins and microelements in a proportionate way, it has good effects on recruitment, antioxidative action and immunocompetence and is also efficacious in treating diseases of the circulating system of

blood, inflammation, skin diseases and diabetes. In particular, it has the highest qualities in removing poisoning by CO gas, chemical materials and burn and headache caused by alcohol by improving cerebral and metabolic functions in a matter of time.



PHYONGSONG Artificial Leather Factory



Situated in Phyongsong, South Phyongan Province, the Phyongsong Artificial Leather Factory produces different kinds of artificial leather for making footwear, bags and other consumer goods.

In recent years it reinforced and modernized the production processes and thus laid a solid material and technological foundation for turning out quality synthetics whose tensile and bending strength and other physical and qualitative properties are as good as natural one.

Nonwoven fabric production process in which fibres fed by fixed supply machine are pressed for various purposes through blowing, carding, needle punching machines. is fully automated.

Wet and dry synthetic leather production processes are all flow-lined.

In the wet process base materials are soaked in solvents, dried and coated with plastic liquid through

precision coating machine. And vacuum rectification treatment technique is introduced into the process, recycling 99.8% of solvents.

Base leather materials are jointed, dried and cooled in the dry process to produce synthetic leather in various colours, patterns and glaze.

The factory turns out Taebongsan-brand bags with synthetic leather.

It is striving to establish an integrated manufacturing system at a high level and apply advanced science and technology to production, so as to sharply increase the production of quality synthetic leather in diverse colours and types.

Korea Footwear Trading Company
Add: Central District, Pyongyang, DPR Korea
Tel: 0085-02-18111-18999 op 341-8140
Fax: 0085-02-381-4485, 4410
E-mail: midea@star-co.net.kp



5 000 Ton-class Trade Cargo Ship *Ja Ryok*

It is a cargo ship to carry coal, ore, grain, fertilizer and others.

- Technical specification

Maximum length: 99.95m
 Width: 16.2m
 The board height: 8.5m
 The water line: 6.6m
 Total transport capacity: 5 400t
 Lightweight displacement: 2 700t
 Cargo hold capacity: 7 094.6m³
 Main engine: 1 765kW
 Auxiliary engine: Just under 200kW
 Speed: 10kn

The ship was built in Juche 105 (2016) in conformity with the international conventions on the building and safety of sea-going ships including those for the safety of life at sea and the prevention of pollution from ships, and those on labour at sea and convenient sea traffic.

Pipha Shipping Company

Add: Moranbong District, Pyongyang,
 DPR Korea
 Tel: 0085-02-341-8236
 Email: shipping_jr @ silbank.net.kp

LED Floodlight with Auxiliary Reflector



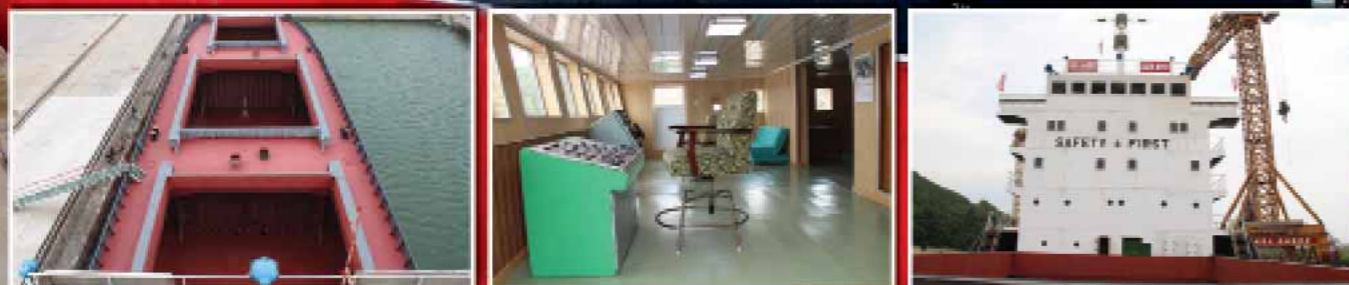
The LED floodlight with an auxiliary reflector is a focusing floodlight to use all beams of the LED light source. Its auxiliary reflector helps greatly raise the efficiency of LED floodlight from less than 60% to 100%. It was awarded an inventor medal by the WIPO in Juche 105 (2016).

Technical specifications

Index/Kind	Maximum focusing 1.5-12- μ	Maximum focusing 0.9-5- μ
AC voltage (V)	130-250	130-250
Frequency (Hz)	35-65	35-65
Light diffusion angle ($^{\circ}$)	1.5	0.9
Central light intensity (cd)	1 400 000	700 000
Power consumption (W)	50	25

Kanghung Technology Trading Company
 Add: Sosong District, Pyongyang, DPR Korea
 Tel: 850-2-18111-341-8544
 Fax: 850-2-343-6663
 E-mail: arirangip@star-co.net.kp

IPO | OMPI



KORYO CELADON

As part of Korea's time-honoured cultural heritage, Koryo celadon is well known across the world for its unique shape, colour and pattern decoration.

It appeared in the period of Koryo (918-1392), which was the first unified state in the medieval Korean history, hence its name. The bluish porcelain showcases Korean forebears' sentiment, sense of beauty and resourcefulness.

A harmonious combination of enchanting jade-green colour, diverse and elaborate inlaid design, and soft and rhythmic shape is the secret behind its enduring popularity.

With the art of production adopting modern touch of beauty, Koryo celadons are always being highly appreciated at international expos and shows.

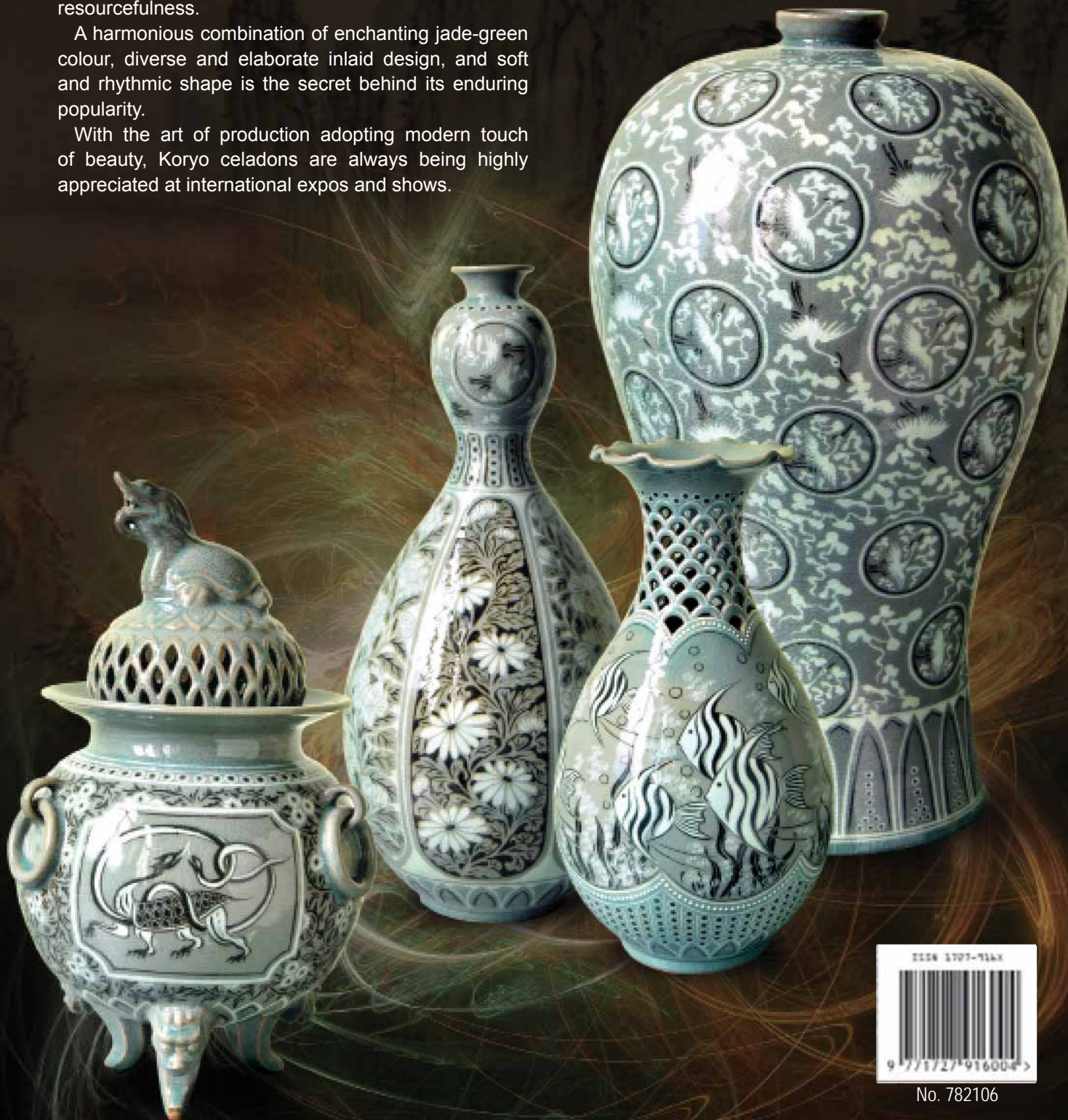
Mansudae Overseas Project Group of Companies

Add: Phyongchon District, Pyongyang, DPR Korea

Tel: 0085-02-18111-341-8577

Fax: 0085-02-381-4410

E-mail: mansudae@star-co.net.kp



No. 782106